

CCCLM



KNOWLEDGE NETWORK

Canadian
Conservation
and Land
Management



Photo Credit: Rachel Cook

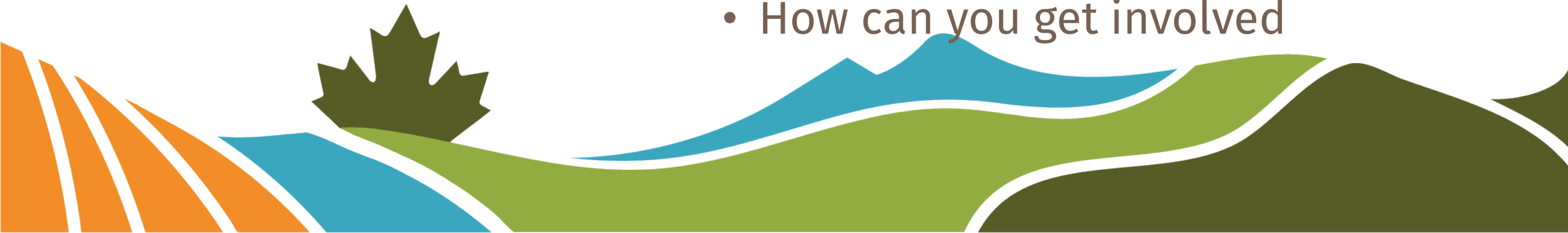


Photo Credit: NAIT CBR



Photo Credit: M. McKenzie

- Our shared vision
- Who's involved and why
- Where are we and how did we get there
- How can you get involved

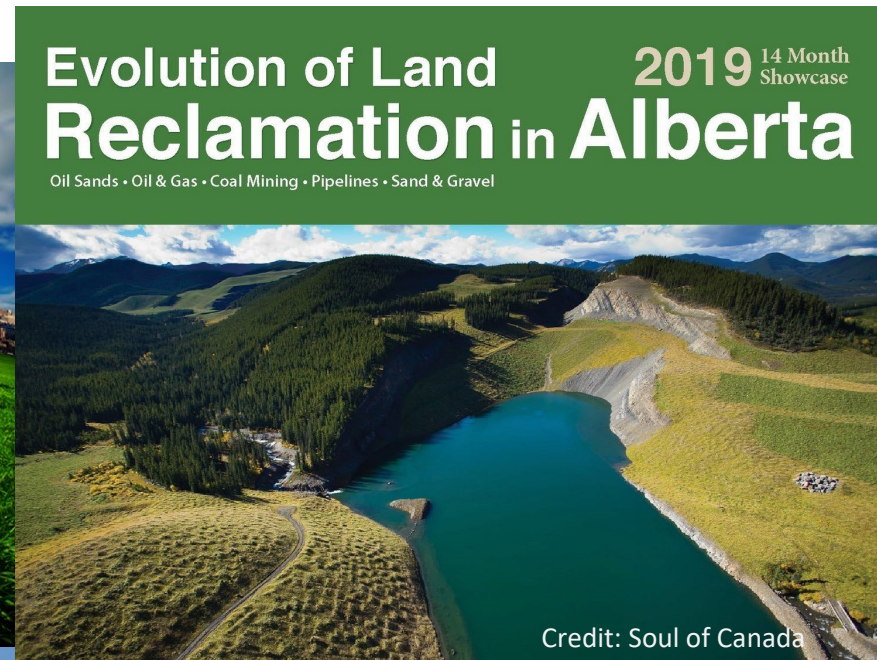


What is the CCLM?

The purpose of the Canadian Conservation and Land Management (CCLM) Knowledge Network is to leverage the resources of its members to create a forum for sharing information and lessons learned about **boreal caribou conservation**, **wetland best practices**, and **land reclamation and restoration**.



Canada's Conservation and Land Management Challenges



WWW.CCLMPORTAL.CA

What can we help you find?



Why a National Knowledge Portal?

- Have a single “go to” place for information.
- Help people understand who is doing what and where.
- Build a reputable, transparent home for information.
- Synthesis of information and consistency in presentation.



Who's Involved and Why?

Developers

:



CENTRE FOR BOREAL RESEARCH



Ducks Unlimited
Canada



National Boreal Caribou Knowledge Consortium



Canada

Canadian Forest Service / Service canadien des forêts

Support Provided By:



Environment and
Climate Change Canada

Environnement et
Changement climatique Canada



cosia[®]
CANADA'S OIL SANDS
INNOVATION ALLIANCE



Who's Involved and Why?

The main objectives of the project and collaboration are to:

1. Share the costs of development and leverage the learnings/scoping done to date by the collaborating organizations.
2. Achieve the critical mass audience to be effective.
3. Incentivize sharing by connecting knowledge contributors with all key partners in the natural resource management and conservation fields in Canada.



Where are we and how did we get there?

4 Phase Approach

- Phase 1 – Initiated fall 2018
- Phase 2 – Initiated spring 2019
- Phase 3 – Development ('19/20)

LAUNCH – April 2020

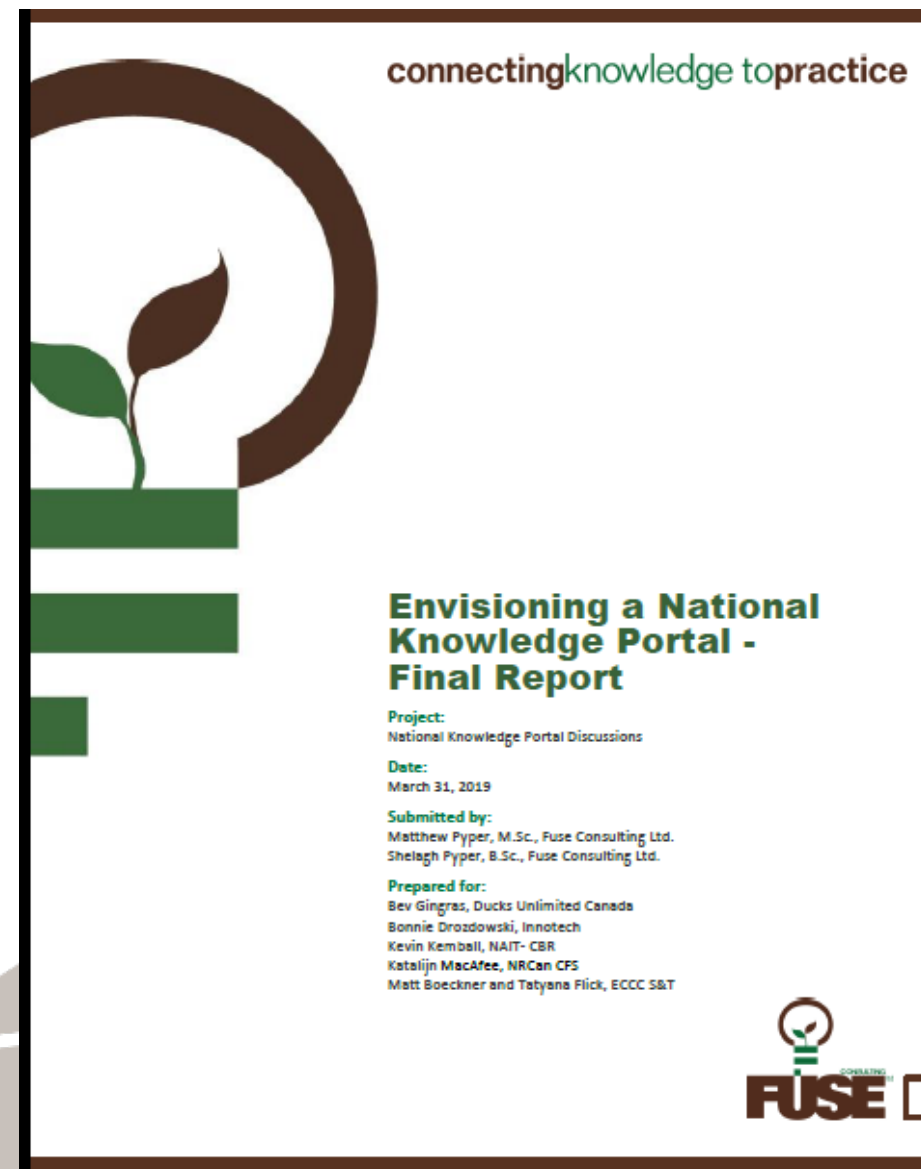
- Phase 4 – Refinement



Where are we and how did we get there?

Outcomes from Phase 1

- Goals and mission for the CCLM
- Governance and membership
- Requirements to achieve individual goals
- Preliminary structure for the CCLM site
- Project plan for next steps and budget



Where are we and how did we get there?

Functionality Requirements

The first phase of this project was able to build off previous scoping and stakeholder consultations and narrow down the most important requirements of the site.

Need-To-Haves	Nice-To-Haves
Excellent Search function (full-text search)	Newsletter
Categories/filters (e.g., topic area, resource type, etc)	Classify content based on ease of access or availability
Searchable links to resources hosted elsewhere	Some sections open to only a subset of users
Permanent links to files	Stats on the quantity and breadth of info within the portal
Mobile friendly	
Social media connection	
Security certificate	
Clear focus on target audience	
Intuitive interface	
Feedback function (for site and documents)	
Easy navigation to the homepage from all pages	
Interactive map of current projects	
Contact Directory	
Api model for integration of independent portals	
Thumbnail images or Theme icons on search results	
Active links to projects, themes, contributors within description of each returned search result	

- Considerable effort determining what we wanted the site to be AND what we DID NOT want the site to be.
- Primary function is the **Search Function**



Where are we and how did we get there?

Phase 2

- Raised \$178,500 in capital for initial development from participating organizations.
- Released “Request for Proposal” and selected Digital Echidna to initiate development.
 - UX Certified
 - Drupal CMS (open source)
 - Solr search platform



Request for Proposals

Development of a network of websites to share knowledge resources about conservation and land management across Canada

Phase 2 of the Canadian Conservation and Land Management (CCLM) Knowledge Network

Proposal Release Date:

May 3, 2019

Proposal Submission

May 23,

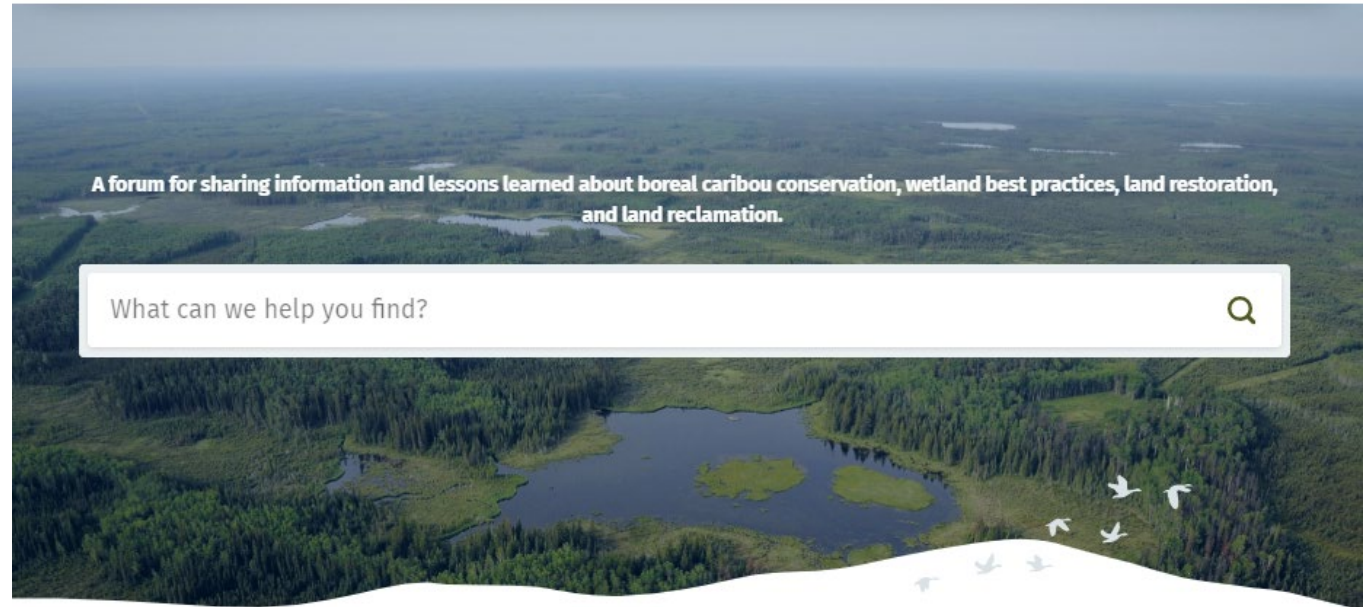
Submissions must be received



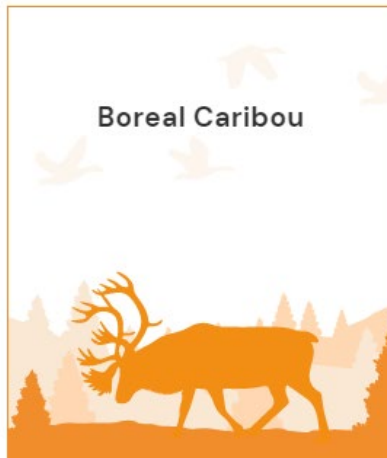
digital echidna

Where are we and how did we get there?

- Launched project with developer in June 2019.
- Completed initial discovery phase and card sort exercise.
- Reviewed composites for the site.



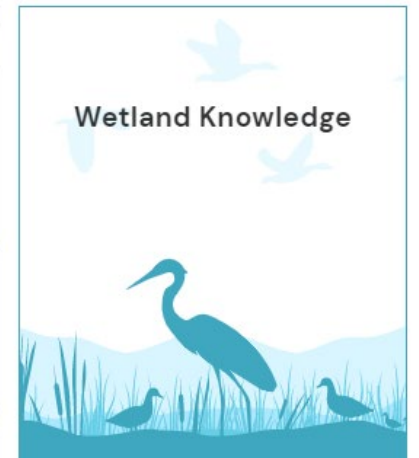
Boreal Caribou



Land Management

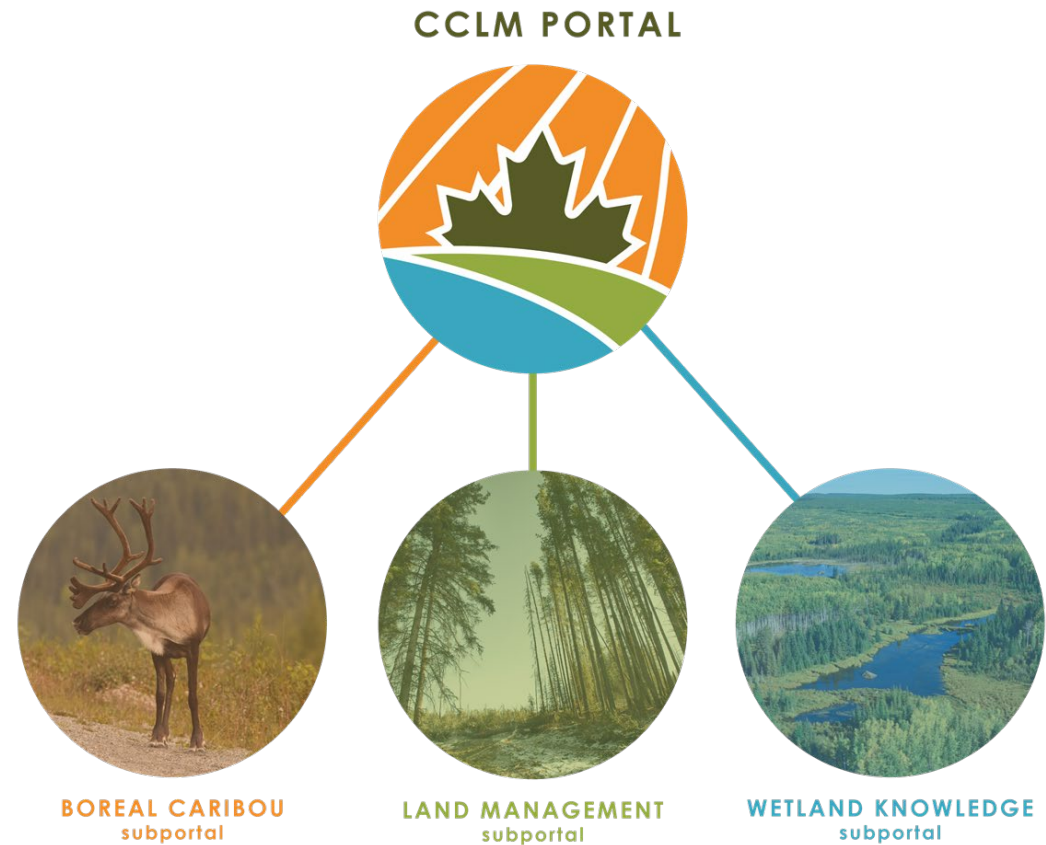


Wetland Knowledge



Where are we and how did we get there?

- Site is structured to house three subportals within the main CCLM portal.



Where are we and how did we get there?



PORTAL MENU

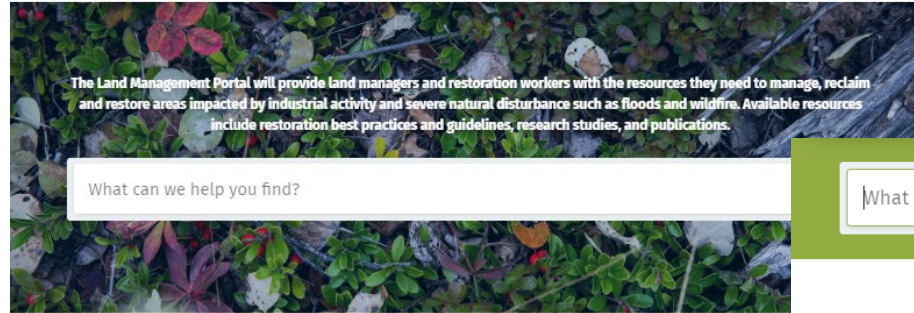
ABOUT

CONTACT US

EVENTS

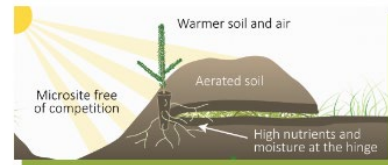
NEWS

RESOURCE SEARCH



- Individual portals essentially stand alone, but have a consistent look and feel
- Searchable from the main page and individual portals

FEATURED RESOURCE



2017

A Guide to Mounding

Preparing optimal microsites for seeding establishment

DOWNLOAD RESOURCE (0.46 MB) SHARE

New Resources

2017

A Guide to Mounding

DOWNLOAD RESOURCE (0.46 MB)

SHARE

2017

A Guide to Natural Regeneration and Seeding

DOWNLOAD RESOURCE (0.26 MB)

SHARE

2017

A Guide to Soil Decomp

DOWNLOAD RESOURCE (0.43

SHARE

SHOWING RESULTS:

reclamation

Filter Your Search:

PORTAL

- Land Management
- Wetland Knowledge
- Boreal Caribou

RESOURCE TYPE

- Technical guide
- Peer reviewed article
- Report
- Book
- Fact sheet
- Presentation
- Workshop materials
- Tutorial

DISPLAYING: 1 - 20 OF 113

A Life Cycle Approach to Vegetation Management on Reclaimed Industrial Sites

Resource

ORGANIZATION: [NAIT Centre for Boreal Research](#)

PROJECT: [Forest Reclamation and Boreal Reforestation](#)

This resource is an excerpt from an issue of Canadian Reclamation (Issue 4, Vol 14) containing an article advising practitioners on best practices for vegetation management using the Life Cycle...

SHARE DOWNLOAD RESOURCE

to Vegetation Management on Reclaimed Industrial Sites

LAND MANAGEMENT

Inventory of Native Species Seed Mixes in Alberta: December 2018 Update

Resource

ORGANIZATION: [InnoTech Alberta](#), [Enviro Q & A Services](#)

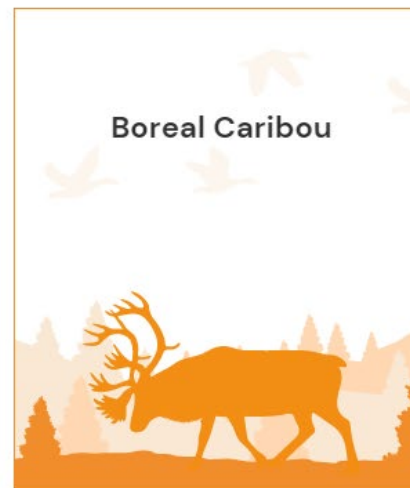
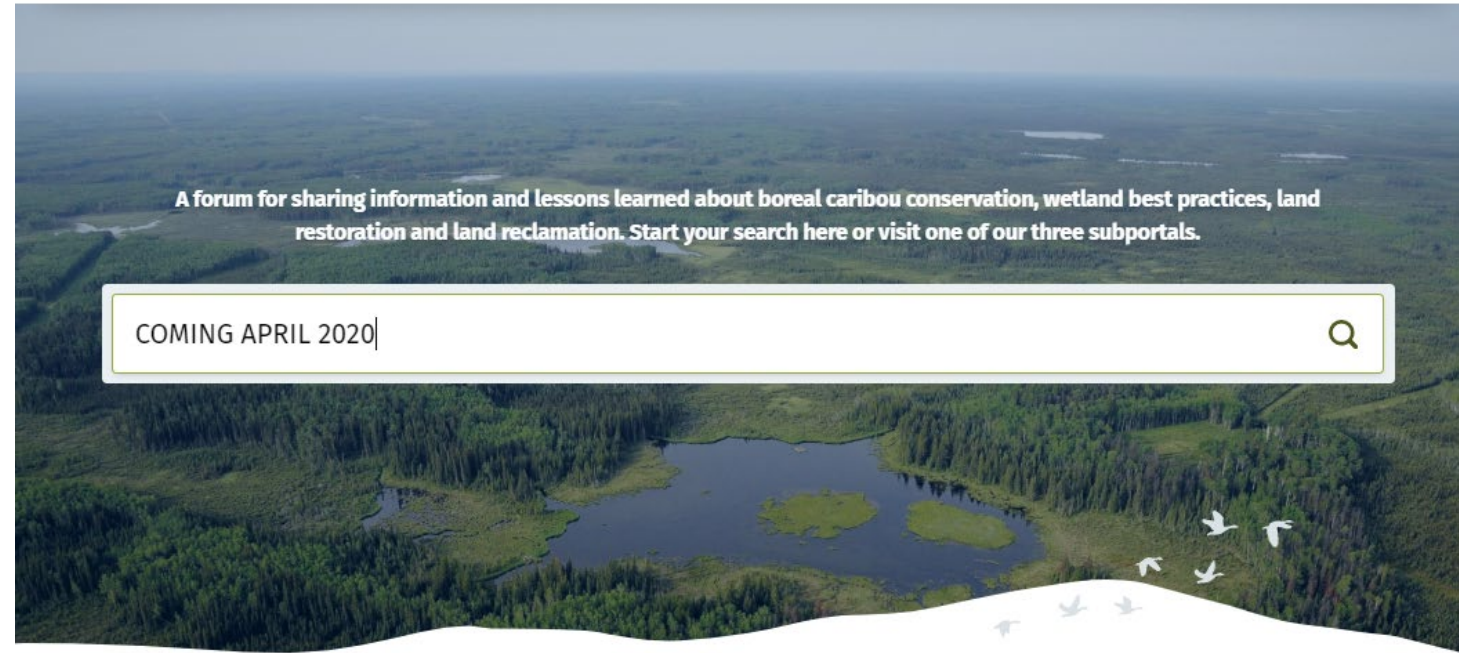
The Government of Alberta has long been a strong proponent of the use of native species for land reclamation and restoration projects. In 1973, the Department of Agriculture began an evaluation of...

SHARE DOWNLOAD RESOURCE

LAND MANAGEMENT

What's Next?

- Website Launch – April 2020
- Phase 4 – Continuous Improvement; Maintenance and Hosting
- Resource and Content Upload



How can you get involved?

- What's in it for you?
 - Resources hosted on the site and/or linked to the site.
 - Increase exposure for resources ultimately leading to opportunities to reduce duplication of efforts and identification of additional knowledge gaps.

Contact:

admin@cclmportal.ca



Thank you!!

Want to be notified of launch??

Contact:

connect@cclmportal.ca

